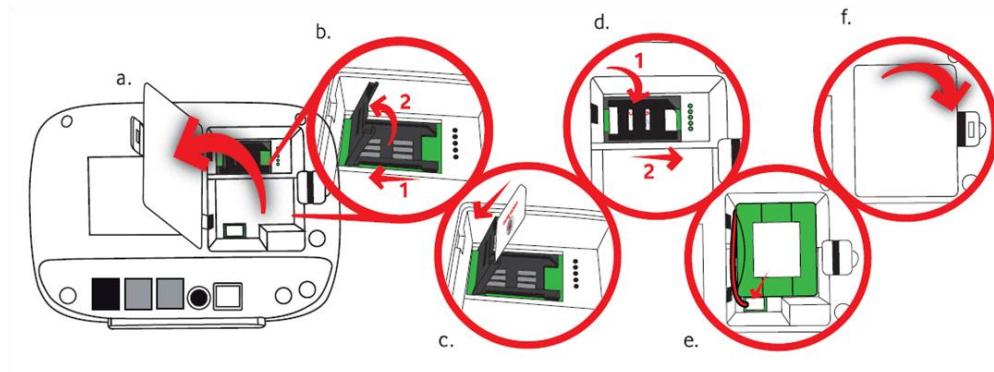


Installation Guide for Vodafone Cordless



SIM insertion

Installing Vodafone Cordless is very simple.

Find all the steps you need to take in this guide, plus an explanatory video for you too.

To start, you need to insert the SIM:

- **a.** remove the cover on the back of the Vodafone Cordless base to access the SIM housing;
- **b.** it unlocks and then lifts the SIM insertion guide, as shown in the figure;
- **c.** insert the SIM * in the correct way, in the direction shown in the figure and slide it into the appropriate seat, until it is completely inserted;
- **d.** close the SIM housing, making sure that it has been blocked properly;
- **e.** connect the battery correctly oriented until it is fully inserted and place the battery in the compartment, as shown in the figure;
- **f.** close the housing using the previously removed cover.

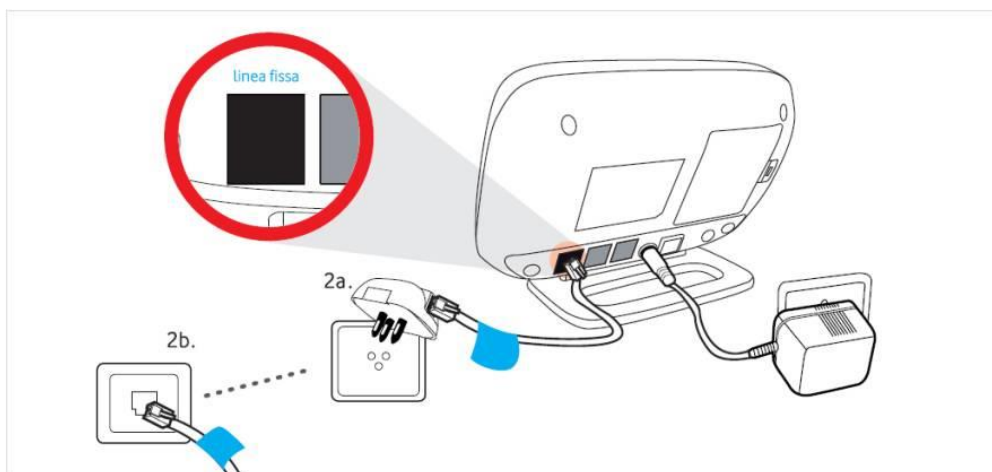
* The SIM should already be inserted, check that it is correctly positioned in the appropriate housing.

NOTE: Inserting the SIM into the appropriate slot, it must be done before connecting the base to the electrical outlet.

Connect the cables

- **1)** If you have requested the Vodafone portability of your landline, connect the Vodafone Cordless both to the electrical outlet and to the telephone socket.
In this way you can immediately call using the Vodafone line, initially on a temporary number, and continue to receive phone calls on your fixed number always.
Once the portability is complete, you can disconnect the Vodafone Cordless from the telephone socket and use only the Vodafone mobile network.

- **2)** If you have requested a new Vodafone landline number, simply connect the Vodafone Cordless to the electrical outlet in order to start making calls. Follow the simple steps as shown in the figure:



- **1)** Unplug your old phone from the telephone socket. Take the cable marked as **Linea Fissa** present inside the box and insert it into the door **linea fissa** on the back panel of the Vodafone Cordless base.
- **2a.** If you have a three-pin socket, first connect the adapter to the socket and then insert the telephone cable into the three-pole adapter.
- **2b.** If you do not have a three-pin socket, but a direct telephone socket, connect the other end of the cable directly to the socket.

In this way you can receive and make calls directly on your Vodafone Cordless.

Only when the number portability process is completed will you be able to disconnect the cable marked as

Connect to the Power

To make the connection to the electric current follow these simple instructions:

- Take the supplied power supply from the box and insert the plug into the "Power" socket on the back.
- Hook the pedestal to the base as shown in the figure, passing the cables over the pedestal itself.
- Connect the power supply to a wall outlet.

Vodafone Cordless is equipped with a battery inside the base that feeds it in the event of a power failure. The base of the Vodafone Cordless only works with the supplied battery.

In case of prolonged power failure, you can switch off the base of your Vodafone Cordless by removing the electrical outlet from the wall and pressing the on / off button on the back of the base itself.

If you want to turn on the base of the Vodafone Cordless again, just reconnect the power supply or press the same button again.

Troubleshooting

Problem Detail	Verifications and Actions
The phone does not ring even if the Fixed Number is free.	In this case, if you requested the portability of the fixed network number, remember to leave your Vodafone Cordless phone connected to the telephone wall socket until the portability on the Vodafone network is completed.
Waiting for the Portability of the fixed network number, the telephone connected to the telephone wall socket no longer gives the dial tone .	<p>It is likely that the portability process is terminated, from now on only the telephones connected to the ports of your Vodafone Cordless will be enabled to make and receive calls.</p> <p>To use the other telephones connected to the wall sockets at home, you must request the adaptation of your system by your electrician of confidence.</p> <p>As confirmation of the portability, make a call from the Vodafone Cordless desk phone to a mobile phone and check on the display that the number displayed is your Fixed Network number, which you had requested to import.</p> <p>If instead the portability process is not finished because on the display of the cell phone you have contacted, see your temporary number again:</p> <ul style="list-style-type: none">• check that the Vodafone Cordless is correctly connected to the electrical outlet;• check that the SIM is correctly inserted in the dedicated slot and enabled for the service.
The phone connected to the Vodafone Cordless does not give the tone of free .	<p>In this case:</p> <ul style="list-style-type: none">• check that Vodafone Cordless is correctly connected to the socket and that the word Vodafone appears on the display. If the message "no service" or "limited service" appears on the display, disconnect and reinsert the power cord and verify that the Vodafone message appears;• check that the SIM is correctly inserted in the dedicated slot and enabled for the service;• try to place Vodafone Cordless where there is a better coverage of the Vodafone network signal (for example near a window). <p>We remind you that it can be connected to your Vodafone Classic, through the telephone cable, any type of telephone (both traditional keyboard and cordless) set in multifrequency mode (MF). Old disk phones are not supported.</p>
The audio is not optimal during the conversation .	In this case:

- try to place Vodafone Cordless where there is a better signal coverage of the Vodafone network (for example near a window).
- check that the **telephone cable** is correctly connected to the Vodafone Cordless;

Remember that to get the best signal quality, it is best to place your phone at least **50 cm away** from the Vodafone Cordless and away from electrical appliances (eg microwave ovens).

Why if someone calls my landline is free but no phone rings ?

Check that you have correctly connected your phones to your Vodafone Cordless. **If you have requested the portability** of your landline number you must leave a telephone connected to the telephone wall socket, until your number is brought to the Vodafone network.

From that moment on the telephone connected to the telephone wall socket will no longer give the free signal.

The **screen display does not light up** after the phone was turned on (my Vodafone Cordless **not** is **connected** to the power supply)

Verify that the battery is installed correctly.

If the battery level is low, connect your Vodafone Cordless to the power supply.

Why can not I complete the dialling before the call starts?

In this case it is possible to increase the number dialling time before the phone makes the call.

If you own Vodafone Classic:

- Access the Menu → Settings → Phone
- Select the Wait section before calling
- Select the value 5 seconds using the arrow keys on the keyboard and press OK

If you have Vodafone Cordless:

- Access the Menu → Phone
- Select the Wait section before calling
- Select the value 5 seconds using the arrow keys on the keyboard and press OK